



CONTEMPORARY COASTAL

Designed with a deep appreciation for fine art, local culture and natural elements, this 2,545 square-foot condo built by A. Vernon Allen Builder and re-designed by Herscoe Hajjar Architects, is one of four units that make up the "Rooftops on Fourth." This home is a prime example of a great escape in a perfect location. "With convenience, accessibility, and luxury all wrapped up into one fabulous package, it's like no other property in Naples," says Ryan Benson, Partner at A. Vernon Allen.



This unit boasts a two-car garage with drive-through passage, expansive veranda, private rooftop terrace with outdoor kitchen, and yes, a private elevator. Once inside, the ease of coastal living takes over, and the transformation from harried to unhurried reigns. With single-story living and private roof terraces for each residence, this condominium design is beyond comparison.

"It is a contemporary interpretation of coastal living," says Jett Segal, Interior Designer and Owner of Jett & Company Inc. Interior Design. "The design concept was birthed after my client expressed an interest in moving away from the style of one of their homes we built together that was appointed in old world Mediterranean elegance. This new home is intentionally designed to be classically modern with high style furnishings," describes Segal.

The designer adds, "Harmonizing the textures of oversized vein cut travertine, large open grained wood, rough cut mother-of-pearl, exotic granites and plush natural woven fabrics blended perfectly with the reflective materials of polished chrome and glass found throughout the home. The affect — luxury lifestyle of barefoot elegance embracing all that Naples has to offer, mesmerizing beaches, sunsets, gulf waters and the arts."

The front foyer features a compelling encaustics creation by award-winning artist Robin Luciano Beaty. Paired with a silver-finished driftwood sculpture displayed on a high gloss rosewood-veneered bow-front chest, all of these pieces serve as inspiration for the rest of the home's organic elements, natural color palette, and the collection of nature-inspired fine art.

To the right of the entryway, one is greeted by an engaging open living and dining room area. The design is invigorating with silk drapery, accented in an aqua medallion pattern showcasing the room's 10-foot-high ceilings while providing a wonderful framework for the lovely

This Page — Walls painted in a light dune serve as the perfect backdrop to the vibrant pops of color reflective of the great outdoors. The cocktail table, fully clad in an off-white Shagreen, coordinates beautifully with the Shagreen drawer fronts on the television console. Motion chairs in an Italian woven cotton, silk drapes paired with netted window sheers, and polished accents all contribute to a highly stylized décor that is relaxed but elegant.

Previous Page — Upon entering, one is greeted by a stunning original encaustic silver-finished sculpture and gorgeous bow-front chest, all gallery-lit, setting the tone for innovative design elements very much in keeping with the Naples lifestyle. Acting as a precursor of what's to come in the rest of the home, these, and all of the fine art featured, came from Trudy Labell Fine Art.



Left — Very distinctive pieces set this room apart including a buffet in wood and white leather, original artwork by award-winning artist Madeline Denaro, exquisitely tailored dining chairs in a taupe silk-like fabric, dining table with a parquet inlay, and pendant chandelier with polished chrome and glass accents.

Below — Located at the end of the gallery hallway and outside the master suite is a spectacular mother-of-pearl wall band set as the backdrop to a dramatically lit sculpture that replicates the fluid lines of sea life found on the ocean's floor, sitting atop a contemporary glass and iron pedestal. The effect is extraordinary



French doors leading out to a covered veranda. Comfortable upholstery, streamline designed cocktail table, and side tables offer the perfect spot for relaxing while two custom-sized wool area rugs define each space and add depth and texture. "These rugs are made out of New Zealand wool and Luxcelle which looks like silk," describes Chris Smith of Designers' Rug Center, Inc. "The wool is dyed and then blended to give a striated effect closely mimicking a hand-knotted Tibetan weave," describes Smith.

Additional artwork, many of which are sourced from Trudy Labell Fine Art, contributes to the underlying theme of bringing the outdoors in. Open tray ceilings with up-lights and metallic wallpapered lids, create a subtle but distinctive sophistication that is especially effective at night, and serves to enhance the extensive art collection.

The kitchen is modern and streamlined with mahogany hardwoods and cabinets accentuating the height of the room while also providing ample storage. Lit wall niches showcasing a pair of charming bird sculptures add a unique detail that effectively draws the eyes upward. Exotic Taj Mahal granite countertops, contemporary light fixtures, and a stainless steel border around the bottom perimeter of the room, create a sleek space with great flow.

The living, study, and kitchen area are connected to the rest of the home by an impressive 22-foot-long hallway that serves as a gallery for original artwork and notable art objects. Lighting is key in highlighting architectural features while also representing the artwork with finesse. The floor is a work of art in its own right with a vein-cut travertine inset that brings to life the grain and texture of natural, outdoor elements.

The guest bedrooms showcase custom furniture pieces in a palette of rich taupes, aqua, coral, white, and cardinal. The master bedroom suite, in particular, exudes a Zen-like atmosphere. Tailored and gracious in tranquil platinum, each component is

Top of the line appliances are easily accessible but strategically placed for a clean, uncluttered effect. The stainless steel cabinet base, colorful painting by Stephen Coyle, contemporary vessel-shaped light fixtures, and low-profile swivel barstools in a rich metallic-leather type material synchronize together seamlessly into a highly-functioning kitchen that is open, airy, and spacious.





Above — The master suite is an intoxicating mix of glossy finishes, lavish fabrics and richly-appointed accents. Smokey taupe colored linen drapes with a round glass bead trim, striking pair of crystal lamps, custom-made headboard covered in a woven French cotton sateen, petal artwork, and graphite-colored velvet bench with chrome base at end of bed, all contribute to a feeling of luxurious tranquility.

Opposite — This 8-by-22 foot long gallery hallway features, what appears to be, a runner down the center, but is actually a vein-cut travertine inset outlined in limestone and bordered with mahogany hardwoods—an exciting element that adds dimension, light and texture. A gracious console table sits beneath a colorful painting by Dirk De Bruycker while matching bookcases showcase stunning collectibles including a sculpted ceramic sea coral bowl in a luscious seafoam glaze.





eye-catching, from the plush peppered moss hand-spun wool carpeting, a pair of two-toned inverted bow-front chests, to the tufted headboard with leather base.

The master bath mirrors the bedroom's polished refined style with gorgeous Crema Typhoon granite countertops, vein-cut brushed travertine floors, dual sinks, and custom-driftwood finished cabinets. A large walk-in shower, high-end fixtures, and hand-selected hardware complete the look.

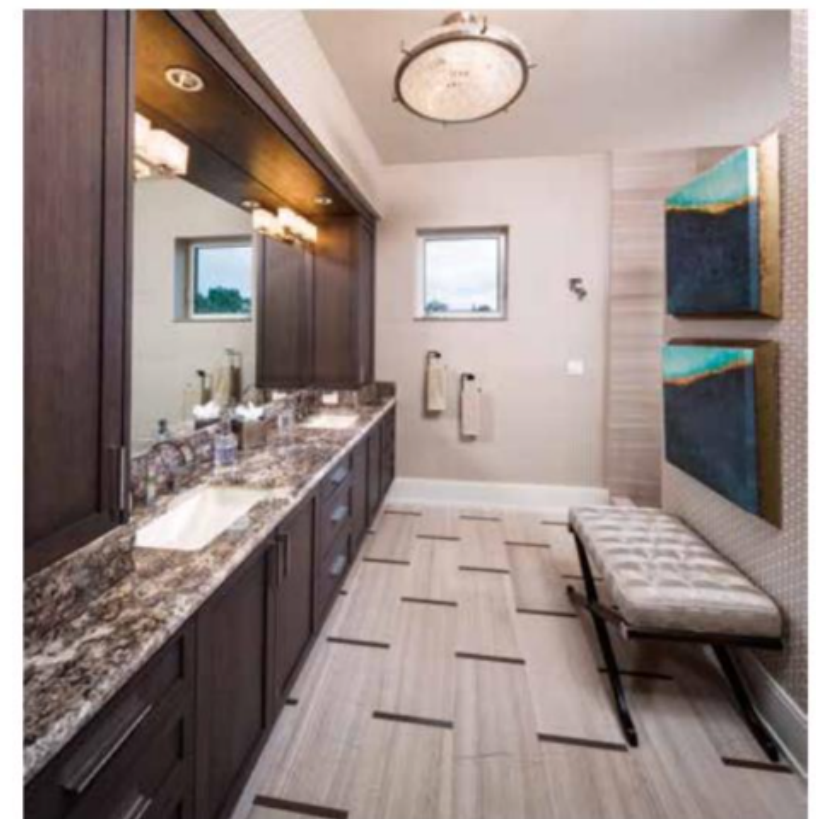
After a workout or day of shopping, take a stroll on the beach, relax on the covered veranda, or ride your private elevator up to the rooftop terrace to enjoy cocktails while watching a stunning sunset. "The balcony porch and rooftop terrace act as additional outdoor rooms," says Robert Herscoe of Herscoe Hajar Architects, LLC. "The terrace, in particular, features a very high-end raised pedestal system allowing proper drainage, and complete access to a waterproofing membrane, so it's always dry and easy to maintain."

Both outdoor areas can easily accommodate large groups, and the private rooftop terrace is equipped with 800 square feet of outdoor living space including an outdoor kitchen, wet bar and grill, and not to mention, spectacular views. With so many options available, the sky's the limit.

Above — White furniture pieces set against beach-house brown walls makes for a fabulous contrast. A white leather bed with chrome accents, chest and end tables in a wrapped linen with glass tops and chrome hardware, and a gorgeous pair of antique mercury glass pendant fixtures hanging on either side of the bed, make for a dramatic effect while still maintaining an earthy, natural feel.

Below — It's all in the details. An ebony-finished wooden bench with chrome accents covered in tufted Italian silk, brushed nickel and Swarovski crystal cabinet pulls, vein-cut travertine floors with brushed flannel limestone insets, and stunning original artwork, make an impactful statement that is almost beyond description.

Opposite — A fanciful aqua and taupe wallpaper serves as a contemporary interpretation of a traditional floral design. Hand-spun wool carpeting in prairie tan, custom-made headboard covered in a raffia-woven herringbone fabric, brushed cotton coverlet, white linen chair with a mohair throw, and decorative pillows in aqua and coral all reflect the colors and textures of nature.





Above — The building features a standing seam metal roof and stucco exterior. This unit includes a foyer, living and dining area, gourmet kitchen, pantry, study with built-ins, gallery hallway, three bedrooms, three bathrooms, expansive veranda, two-car garage with drive through, and a private elevator to private rooftop terrace featuring 800 square feet of additional outdoor living space with phenomenal views.

Below — A tongue-and-groove cypress stained ceiling, Italian porcelain floors with granite accents, and driftwood finished all-weather wicker furniture covered in a chic chevron-patterned Schumacher fabric take dining and lounging to a whole new level in this 400 square feet of extended outdoor living space.



Written by Marcia Carroll Burzair
Photography by Nick Shirghio Photography

A. Vernon Allen Builder, Inc.
1175 1st Avenue South
Naples, FL 34102
239.261.5300
www.avabuilder.com

Herscoe Hajjar Architects, LLC
22 10th Street South
Naples, FL 34102
239.643.4010
www.hharch.com

Jett & Company Design Studio, Inc.
780 Fifth Avenue South, Suite 200
Naples, FL 34102
239.261.9769
www.jettandcompany.com

Designers' Rug Center
110 9th Street South
Naples, FL 34102
239.434.9584
www.designersrugcenter.com



Scan to view video or go to:
homeanddesign.net/contemporary-coastal



INTERIOR DETAILING | LUXURY RESIDENTIAL
YACHT INTERIORS | LUXURY MODELS



Barefoot Elegance™... experience the difference

AWARD WINNING INTERIOR DESIGN FIRM AS FEATURED ON PAGE 235

239.261.9769 | JETTANDCOMPANY.COM
1D5481 | NCIDQ_24364
780 FIFTH AVENUE SOUTH SUITE 200 NAPLES FL 34102